

Secure Tracking and Tracing using GS1 and SAP OER

Leverage GS1 EPCIS in Healthcare

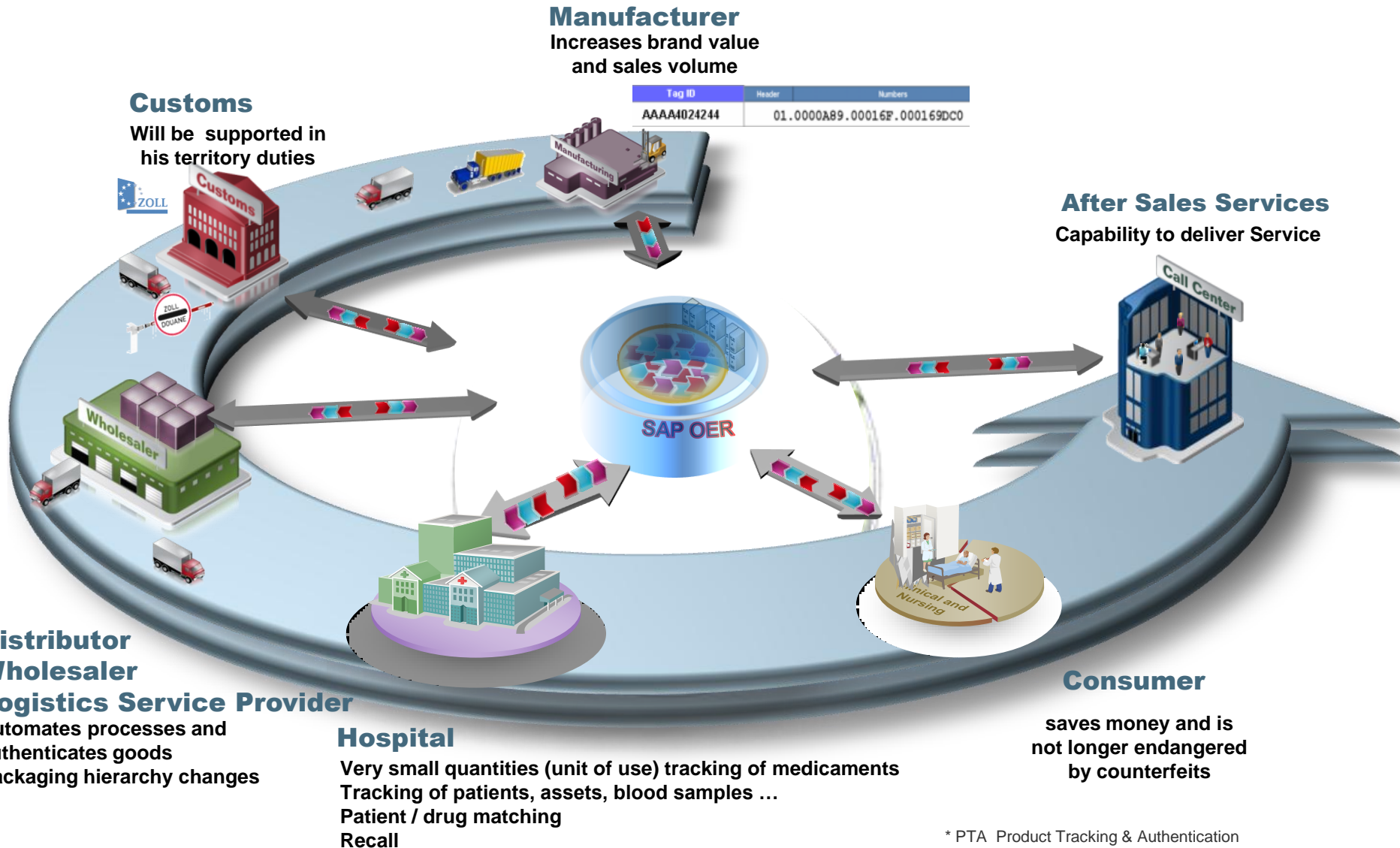
Nino Novinec

nino.novinec@sap.com

- Show benefits of GS1 Healthcare Traceability Standard
 - Increase patient safety by reducing medication errors (patient/drug matching)
 - Product traceability in a complex, global supply chain, global supply chain logistics efficiency
 - Product safety and support withdrawal or recall
 - Legal compliance with national, regional or global regulation
 - Brand protection, product authentication and reduction in risk of counterfeit or fraud
- Show benefits of SAP Object Event Repository, GS1 EPCIS certified solution
 - Smooth Integration of SAP Industry Solution Healthcare or non-SAP systems
 - Integration with diverse tracking equipment
 - Panasonic CF-H1 tablet PC built around Intel MCA platform (Mobile Clinical Assistant)
 - BlackBerry, iPhone or other cell phones with mini web browser
- Unique features of SAP Objects Event Repository beyond standard of GS1 EPCIS Object Event Repository
- Feedback to EPCIS Healthcare Standardization Workgroup
- Reporting related to GS1 Healthcare Traceability Standard

Serialization in Healthcare Supply Chain

Secure Tracking and Tracing with GS1 EPCIS and SAP Object Event Repository



* PTA Product Tracking & Authentication

** OER Object Event Repository

Manufacturer

Supplier Process Steps



- Central number range distribution in SAP OER
- Send to central All
- Creation of serialized objects, also randomized
- Distribute serialized objects to local systems or logistics service providers
- Distribute number ranges for production orders (optionally)

Number Range Administration - Microsoft Internet Explorer

File Edit View Favorites Tools Help

Back Forward Stop Home Search Favorites Refresh Print Mail Print Preview Print Setup

Address http://uscie7q.wdf.sap.corp:50019/sap/bc/webdynpro/ain/ui_nr_administration?sap-language=EN

Number Range Administration

Object Type

Object Type: GTIN

Object Data

Global Trade Identification Number (GTIN): To Status: Uploaded:

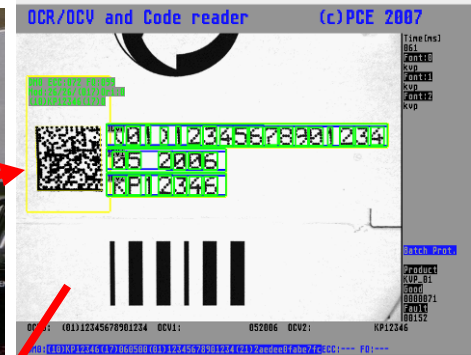
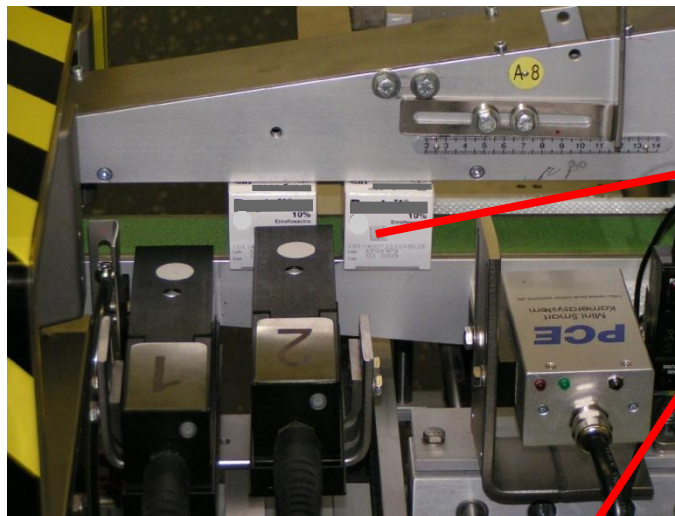
View	[Standard View]	<input type="button" value="Print Version"/>	<input type="button" value="Export"/>	<input type="button" value="Select All"/>	<input type="button" value="Allocate Number Range"/>	<input type="button" value="Block Number Ranges"/>	Filter Settings
	Global Trade Item Number	Sequence Number	Serial Number From	Serial Number To	Current Number	Status	Uploaded
	00037000123453	1	1	100	68	Active	Not uploaded
	00037000123453	2	101	200	200	Blocked	Not uploaded
	00037000123453	3	201	300	301	Inactive	Not uploaded
	00037000123453	4	301	400	400	Blocked	Not uploaded
	00037000442202	1	1	1000	314	Active	Not uploaded
	00037000442202	2	1	2	2	Blocked	Not uploaded
	00037000442202	3	3	5	2	Inactive	Not uploaded
	00037000442202	4	2000	3000	3000	Inactive	Not uploaded
	00037000505372	1	101	999	221	Active	Not uploaded
	00037000505471	1	101	999	2	Active	Not uploaded

Row 1 of 591

Supplier Process Steps



- Receive serialized objects observations, with attributes like GTIN serial number Lot, exp.date ...
- Standard interfact to OER
- Flexible encoding: EAN 128 HIBC ...
- Data security
- Error handling



ID:

GTIN:

SSCC:

Ausführungsst.:

View [Standard View] <input type="button" value="Print Version"/> <input type="button" value="Export"/> <input type="button" value="View Action Objects"/>					
Action Type	Doc ID	Document Type	Location	Location Type	Execution Start
ATCW - Tag Commissioning			WRITE_STATION	Default	25.08.2008 20:23:43

Supplier Process Steps



- Hierarchy uploaded into All &OER (Pack bundle - Karton - Palette - extendible, ex. Blister)

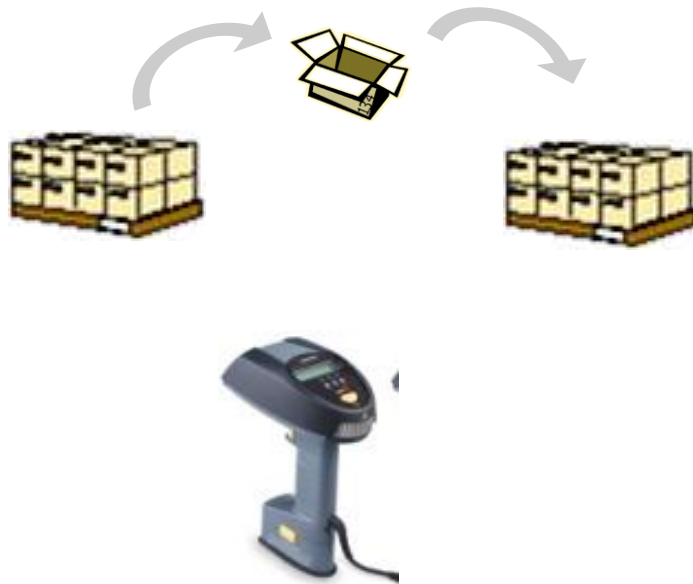
- Steps 2-4 can be done in one step during packing

Object Hierarchy

▼
▼ (01)0-0037000-75829-7(21)94
■ (01)0-0037000-75822-8(21)10201
■ (01)0-0037000-75822-8(21)10202
■ (01)0-0037000-75822-8(21)10203
■ (01)0-0037000-75822-8(21)10204
■ (01)0-0037000-75822-8(21)10205
■ (01)0-0037000-75822-8(21)10206
■ (01)0-0037000-75822-8(21)10207
■ (01)0-0037000-75822-8(21)10208



Supplier Process Steps



- Receive actual packing structures
- All open to third party systems
- Repackaging with mobile devices

SAP Supply Chain Event Management

F3 Back

1. Manage Tag	>
2. Move	>
3. Load	>
4. Unload	>
5. Unpack	>
6. Unpack ChildObjs	>
7. Pack	>
8. Count	>
9. Manage Doc	>

F8 LOff **Select** **Management**

F3 Back

Type: **Outbound Delivery**

Doc.: **0880000032**

ID:

ID Count: **0**

F5 Add ID	F6 IDList
F7 Docs	F8 CmpDoc
F9 DocTyp	

 1

Supplier Process Steps



- Assign delivery (standard SAP process)
- Optional automatic HU creation in SAP SD ist standard-functionality

View [Standard View] [v] [Print Version] [Export] [View Actual Document Objects] [View Expected Document Objects]

Doc ID	Document Type	
880000041	Outbound Delivery	
880000042	Outbound Delivery	
880000043	Outbound Delivery	
880000044	Outbound Delivery	
880000045	Outbound Delivery	

Row 22 of 26 Column 1 of 0

Document Items Document Status

Document Items

View [Standard View] [v] [Print Version] [Export] [View Actual Document Item Objects] [View Expected Document Item Objects]

External Item ID	Action Type	Product ID	Product Description	Expected Quantity	Actual Quantity
000010	ALBO - Load	ANTI_HEADACHE	Anti Headache Solution	1,000	1,000

Supplier Process Steps



SAP Event Management

Tracking Scenario: Delivery - Product Tracking and Authent. Visib.

Outbound Delivery Number: Serialized ID - Product Tracking and Authent. Visib.

Reference Purchase Order Number:

Ship-From Location:

Ship-To Location:

Ship-To Party:

Product:

Batch:

Goods Issue Date: To

Requested Goods Receipt Date: To

Shipping Status: <No Entry Selected>

☐ Return More Than 200 Hits

EPC PTA Information

Serial No.:	00110-0037000-75822-8/2110197
GTIN:	00037000758228
Product:	ANTI HEADACHE
Batch:	XZT-456
Exp. Date:	11.12.2010
Status:	Not Authenticated

Miles Stone Overview

Description	Date	
Production	14.08.2008	08:20:52
Shipping	14.08.2008	09:08:28

Event Messages

View [Standard View]

Business Step	Actual Date/Time	Disposition	Business Location
Production	25.08.2008 20:23:43 UTC+2	Active	urn:epcglobal:fmcg:loc:17000000000001.Single Item Camera
Packing	25.08.2008 20:31:16 UTC+2	Active	urn:epcglobal:fmcg:loc:17000000000002.Packing Case Camera

Row 1 of 2

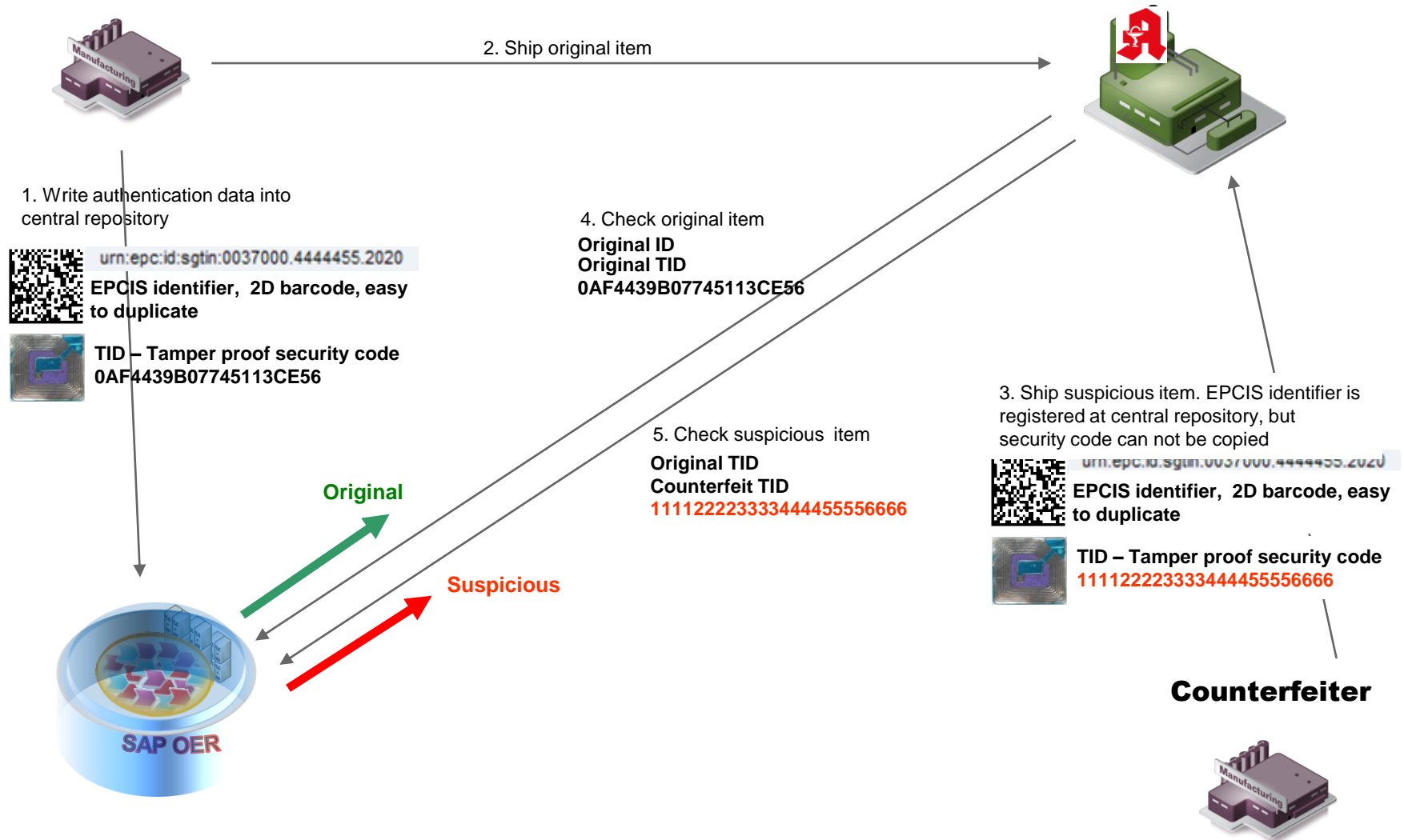
- Report for data extraction
- Optional Integration in MOH or efpi Database
- Role based access to data upload
- Web GUI is Standard-Functionality

Authentication

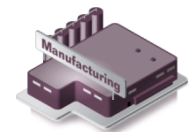
Authentication using GS1 EPCIS and SAP Object Event Repository



Manufacturer



Counterfeiter

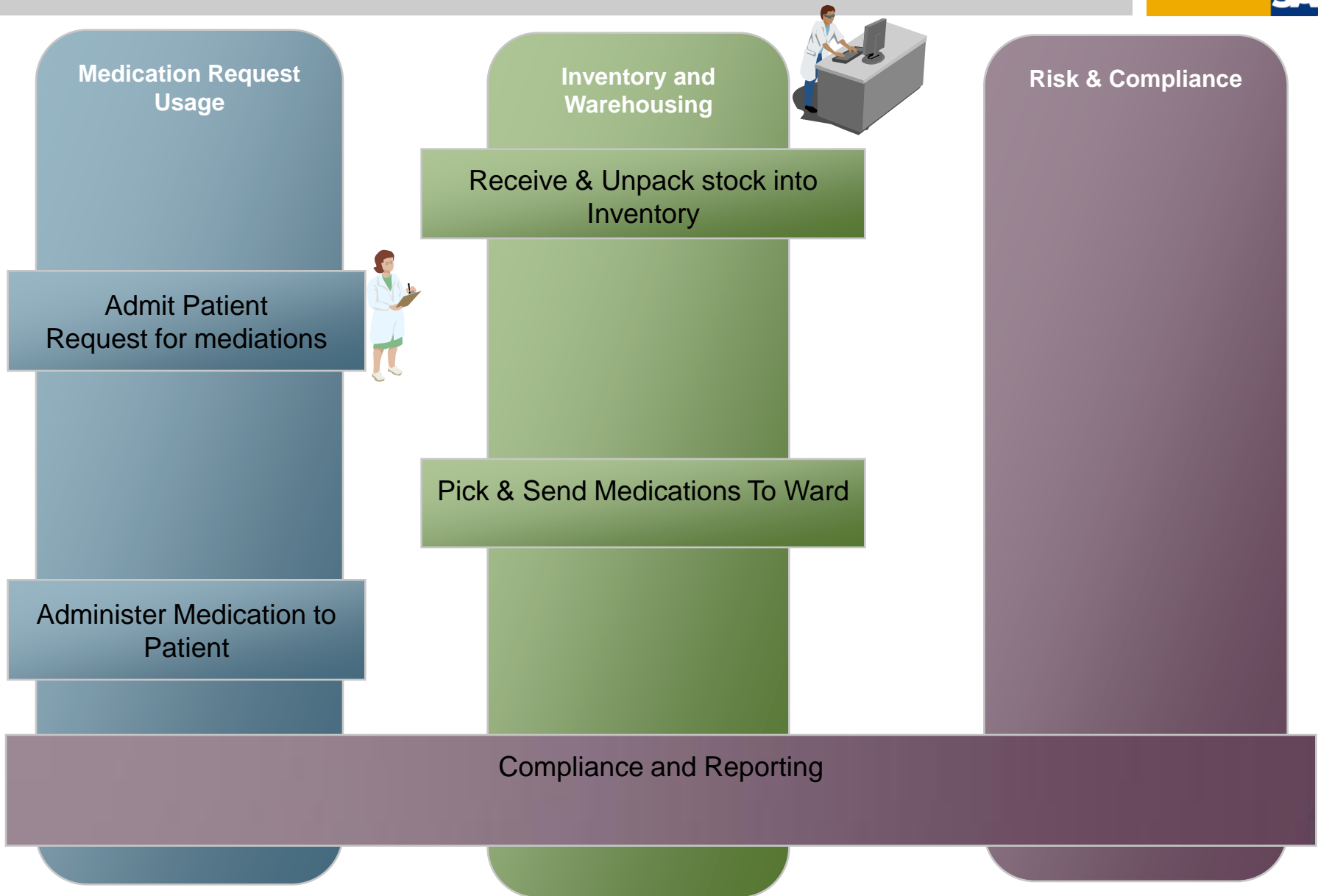


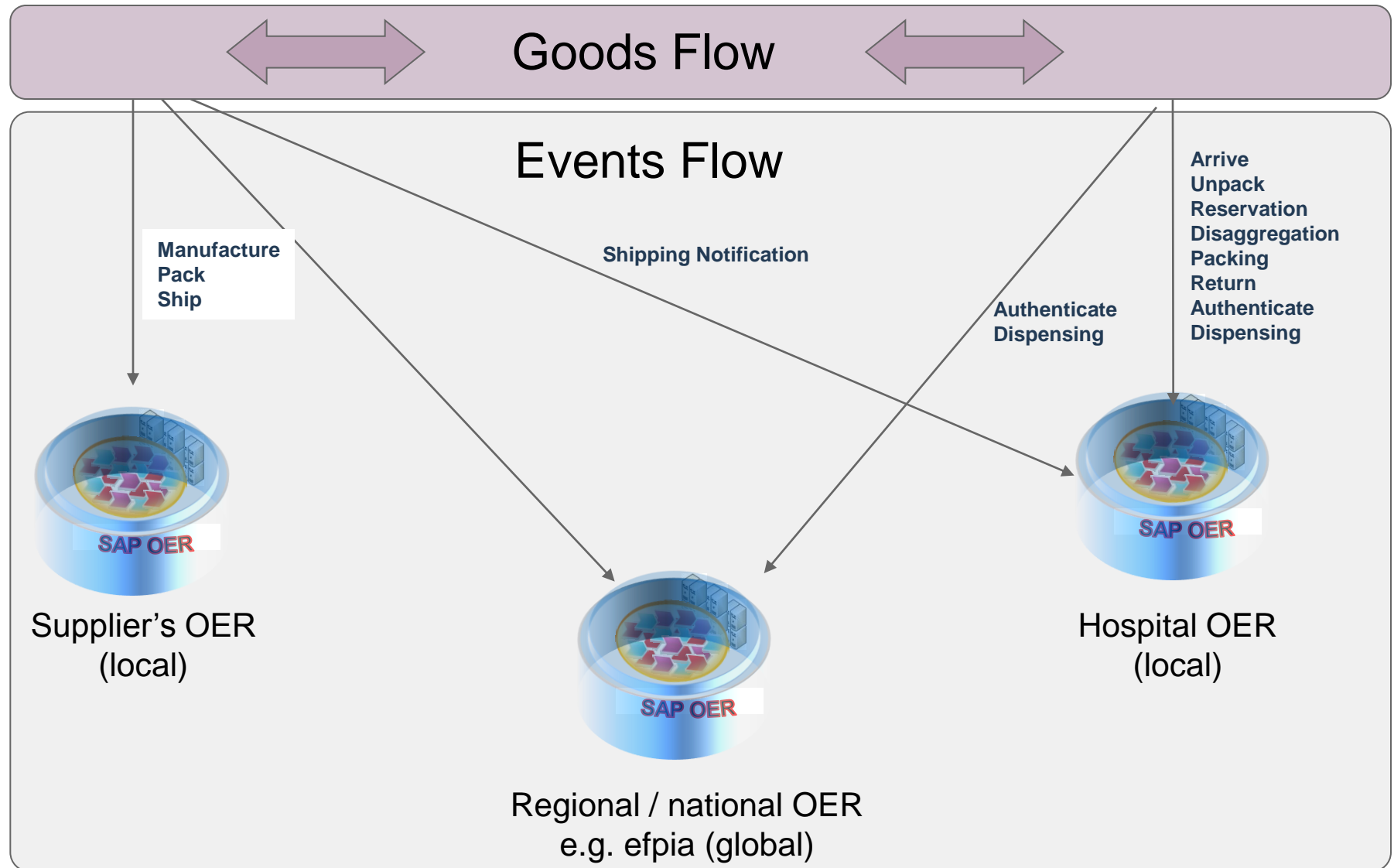
* PTA Product Tracking & Authentication

** OER Object Event Repository

Serialization at Hospital

Manufacturer to Patient - Process Flow

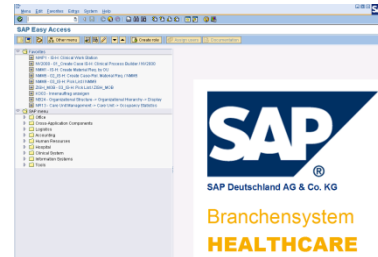




Prototype Landscape and Connectivity Technical View



SAP or non-SAP systems



Cell Phones



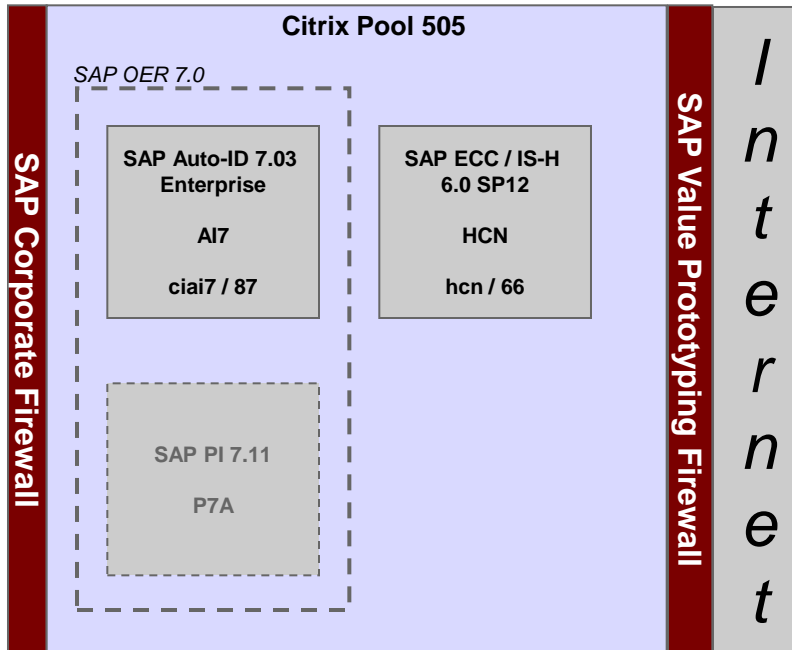
Citrix Client



Electronic Healthcare Records



Tracking devices and systems



Public URLs

- OER AI7 <https://coeportal12.saphosting.de>
- ECC IS-H <https://coeportal41.saphosting.de>